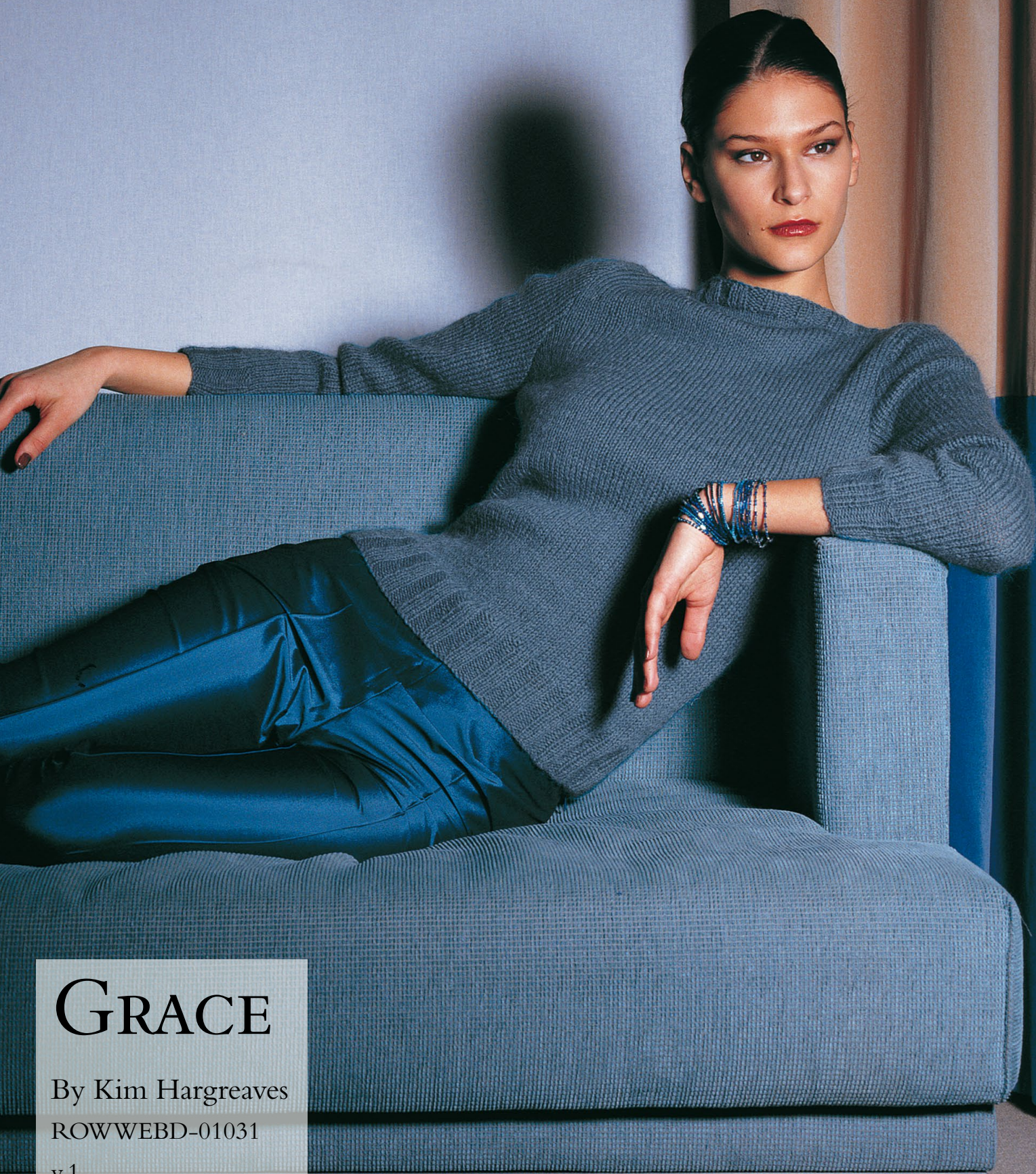


ROWAN



GRACE

By Kim Hargreaves

ROWWEBD-01031

v.1





GRACE

by Kim Hargreaves



ROWWEBD-01031

v.1

Click the image for a full screen, printable version

SIZE

	XS	S	M	L	XL	
To fit bust	81	86	91	97	102	cm
	32	34	36	38	40	in

YARN

Kid Classic

Round neck sweater
6 6 7 7 7 x 50gm

Slash neck sweater
6 6 7 7 7 x 50gm

(round neck sweater photographed in Tattoo 856)

**More Yarn
Information**

on knitrowan.com

NEEDLES

1 pair 4mm (no 8) (US 6) needles
1 pair 5mm (no 6) (US 8) needles

TENSION

19 sts and 25 rows to 10 cm measured over stocking stitch using 5mm (US 8) needles.

Round neck sweater

BACK

Cast on 79 (83: 89: 93: 99) sts using 4mm (US 6) needles.

Row 1 (RS): K2 (1: 1: 3: 3), *P3, K3, rep from * to last 5 (4: 4: 6: 6) sts, P3, K2 (1: 1: 3: 3).

Row 2: P2 (1: 1: 3: 3), *K3, P3, rep from * to last 5 (4: 4: 6: 6) sts, K3, P2 (1: 1: 3: 3).

These 2 rows form rib.

Work in rib for a further 18 rows, ending with a WS row.

Change to 5mm (US 8) needles.

Beg with a K row, work in st st for 2 rows.

Next row (RS): K2, K2tog, K to last 4 sts, K2tog tbl, K2.

Working all decreases 2 sts in from ends of rows as set by last row, cont in st st, shaping side seams by dec 1 st at each end of every foll 10th row to 73 (77: 83: 87: 93) sts.

Work 11 rows, ending with a WS row.

Next row (RS): K2, M1, K to last 2 sts, M1, K2.

Working all increases 2 sts in from ends of rows as set by last row, inc 1 st at each end of every foll 8th row until there are 83 (87: 93: 97: 103) sts.

Cont straight until back measures 38 (39: 39: 40: 40) cm, ending with a WS row.

Shape armholes

Cast off 3 (4: 5: 6: 7) sts at beg of next 2 rows.

77 (79: 83: 85: 89) sts.

Dec 1 st at each end of next 3 rows, then on foll 4 (4: 5: 5: 6) alt rows. 63 (65: 67: 69: 71) sts.

Cont straight until armhole measures 20 (20: 21: 21: 22) cm, ending with a WS row.

Shape shoulders and back neck

Cast off 4 (4: 5: 5: 5) sts at beg of next 2 rows.

55 (57: 57: 59: 61) sts.

Next row (RS): Cast off 4 (4: 5: 5: 5) sts, K until there are 9 (9: 8: 8: 9) sts on right needle and turn, leaving rem sts on a holder.

Work each side of neck separately.

Cast off 4 sts at beg of next row.

Cast off rem 5 (5: 4: 4: 5) sts.

With RS facing, rejoin yarn to rem sts, cast off centre 29 (31: 31: 33: 33) sts, K to end.

Work to match first side, reversing shapings.

FRONT

Work as given for back until 16 (16: 16: 18: 18) rows less have been worked before start of shoulder shaping, ending with a WS row.

Shape neck

Next row (RS): K23 (23: 24: 25: 26) and turn, leaving rem sts on a holder.

Work each side of neck separately.

Cast off 4 sts at beg of next row. 19 (19: 20: 21: 22) sts.

Dec 1 st at neck edge on next 3 rows, then on foll 2 (2: 2: 3: 3) alt rows, then on foll 4th row. 13 (13: 14: 14: 15) sts.

Work 3 rows, ending with a WS row.

Shape shoulder

Cast off 4 (4: 5: 5: 5) sts at beg of next and foll alt row.

Work 1 row.

Cast off rem 5 (5: 4: 4: 5) sts.

With RS facing, rejoin yarn to rem sts, cast off centre 17 (19: 19: 19: 19) sts, K to end.

Work to match first side, reversing shapings.

SLEEVES (both alike)

Cast on 43 (43: 45: 47: 47) sts using 4mm (US 6) needles.

Row 1 (RS): K2 (2: 3: 1: 1), *P3, K3, rep from * to last 5 (5: 6: 4: 4) sts, P3, K2 (2: 3: 1: 1).

Row 2: P2 (2: 3: 1: 1), *K3, P3, rep from * to last 5 (5: 6: 4: 4) sts, K3, P2 (2: 3: 1: 1).

These 2 rows form rib.

Work in rib for a further 18 rows, inc 1 st at each end of 11th of these rows and ending with a WS row. 45 (45: 47: 49: 49) sts.

Change to 5mm (US 8) needles.

Beg with a K row and working all increases 2 sts in from ends of rows as given for back side seams, cont in st st, shaping sides by inc 1 st at each end of 3rd and every foll 10th row to 57 (57: 61: 63: 55) sts, then on every foll 12th (8th: 8th: 8th: 8th) row until there are

61 (63: 65: 67: 69) sts.

Cont straight until sleeve measures 43 (43: 44: 44: 44) cm, ending with a WS row.

Shape top

Cast off 3 (4: 5: 6: 7) sts at beg of next 2 rows. 55 sts.

Dec 1 st at each end of next 3 rows, then on foll 3 alt rows, then on every foll 4th row until 35 (35: 33: 33: 31) sts rem.

Work 1 row, ending with a WS row.

Dec 1 st at each end of next and foll 3 (3: 2: 2: 1) alt rows, then on foll row. 25 sts.

Cast off 4 sts at beg of next 2 rows.

Cast off rem 17 sts.

Slash neck sweater

BACK AND FRONT (both alike)

Work as given for back of round neck sweater until armhole measures 17 (17: 18: 18: 19) cm, ending with a WS row.

Shape neck

Next row (RS): K16 (16: 17: 17: 17) and turn, leaving rem sts on a holder.

Work each side of neck separately.

Cast off 4 sts at beg of next row. 12 (12: 13: 13: 13) sts.

Dec 1 st at neck edge on next 5 rows. 7 (7: 8: 8: 8) sts.

Work 1 row, ending with a WS row.

Shape shoulder

Cast off 3 sts at beg and dec 1 st at end of next row.

Work 1 row.

Cast off rem 3 (3: 4: 4: 4) sts.

With RS facing, rejoin yarn to rem sts, cast off centre 31 (33: 33: 35: 37) sts, K to end.

Work to match first side, reversing shapings.

SLEEVES (both alike)

Work as given for sleeves of round neck sweater.

MAKING UP

PRESS.

Round neck sweater

Join right shoulder seam using back stitch, or mattress stitch if preferred.

Neckband

With RS facing and 4mm (US 6) needles, pick up and knit 15 (16: 16: 18: 18) sts down left side of neck, 17 (19: 19: 19: 19) sts from front, 15 (16: 16: 18: 18) sts up right side of neck, then 37 (39: 39: 41: 41) sts from back. 84 (90: 90: 96: 96) sts.

Row 1: *K3, P3, rep from * to end.

Rep this row 5 times more. Cast off in rib.

Slash neck sweater

Neck edging (both alike)

With RS facing and 4mm (US 6) needles, pick up and knit 10 (12: 12: 14: 13) sts down left side of front neck, 31 (33: 33: 35: 37) sts from front, then 10 (12: 12: 14: 13) sts up right side of front neck.

51 (57: 57: 63: 63) sts.

Row 1: K3, *P3, K3, rep from * to end.

This row sets position of rib as given for back.

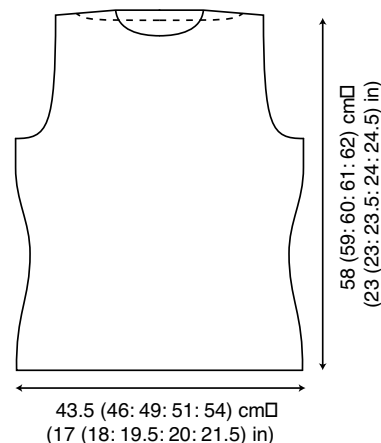
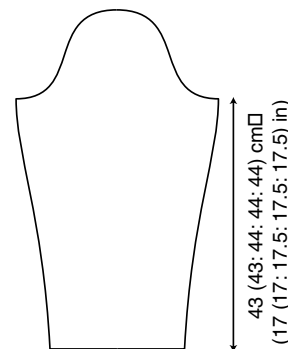
Keeping rib correct, work in rib for a further 5 rows, dec 1 st at each end of every row. 41 (47: 47: 53: 53) sts.

Cast off in rib.

Work back neck edging in same way.

Both sweaters

Set in sleeves using the set-in method.



Click the image for a full screen, printable version

Information
Pages